



震宇防腐科技
ZHENYU TECHNOLOGY



专注防腐自动化

ZHENYU

主营自动喷涂设备、船舶及钢结构防腐维修及技术改进、咨询、服务

震宇防腐科技

ZHENYUFANGFUKEJI

山东震宇防腐科技有限公司
SHANDONG ZHENYU ANTI CORROSION TECHNOLOGY CO., LTD



 **企业简介**
Company profile

**Free Point Spray Workers
from Occupational Hazards**



Shandong Zhenyu Anti corrosion Technology Co., Ltd., founded in 2018, is mainly engaged in the R&D, production and sales of automatic spraying equipment and later grinding and maintenance equipment. Its products cover steel structures, wind power towers, fan blades, pipelines, ships, bridges and other fields. It is a scientific and technological enterprise integrating R&D and production. At present, it has passed ISO9001 quality management system certification, occupational health and safety management system certification, environmental management system certification, and obtained Jinan high-tech enterprise certification.

The main products of the company are the wind power tower inner and outer wall automatic coating equipment and steel structure automatic intelligent spraying equipment, which are the first in China and have independent intellectual property rights. Now, the company has applied for 26 patents, including 4 invention patents, 11 utility model patents and 11 software patents.



产品展示

Product Display

Spraying robot for outer wall of wind power tower:



The automatic spraying robot for the outer wall of Zhenyu anti-corrosion wind power tower is mainly composed of the spraying host, touch screen operation part, wireless operation part and track part, and controls the operation of the equipment through software. It can automatically spray the outer walls of wind power towers of different specifications, save a lot of manpower and paint consumption, and accurately control the film thickness.

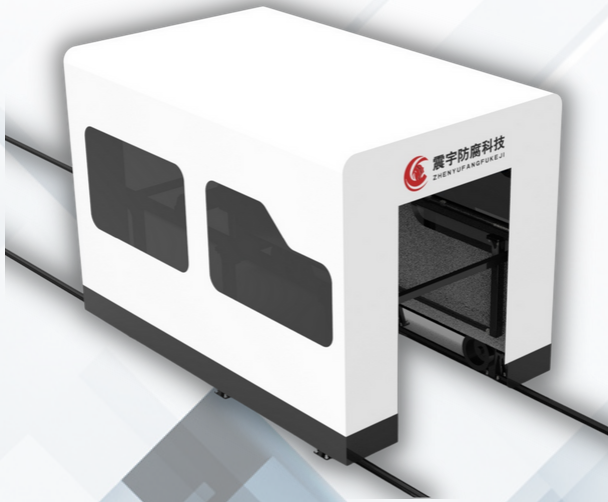
Spraying robot for inner wall of wind power tower:



The automatic spraying robot for the inner wall of Zhenyu anti-corrosion wind power tower is mainly composed of a spraying host, a touch screen operation part and a wireless operation part, and controls the operation of the equipment through software. It can automatically spray the inner wall of wind power tower with different specifications, save manpower and paint consumption, and accurately control the film thickness.

Special transport trolley for equipment. This product is an accessory product of the inner wall equipment, mainly used to transfer the inner wall equipment to complete the spraying of both ends of the inner wall of the tower.

Intelligent spraying robot for steel structure:



Zhenyu anti-corrosion steel structure automatic spraying machine can realize H-shaped, circular, box shaped, column beam spraying construction. Only the operator needs to input the x, y and Z coordinate parameters in the host, the equipment can automatically spray according to the data.

Advantages of automatic spraying machine

- ①The operation of the equipment is simple, and the construction can be completed automatically only by inputting parameters;
- ②The coating film thickness can be precisely controlled as a whole, which can be achieved by fine-tuning the relevant parameters of the equipment;
- ③The uniformity of paint film thickness and overall appearance quality of the whole sprayed surface are improved more, which can create more added value for the owner, and there are no defects and color deviations on the surface such as leakage, hanging, pinhole, cracking, overspraying, etc. under special circumstances (i.e., gun jamming, gun damage, human error in operation), and no adverse phenomena such as leakage, dry spraying, paint mist on the surface of the primer;
- ④Improve the paint utilization rate: reduce the paint consumption, save 10-20% of the amount of paint compared with artificial, the outer wall spray wear factor is not higher than 1.4, the inner wall spray wear factor is not higher than 1.3, at the same time, avoid the improper quality of paint caused by improper manual operation, improve the pass rate once, and reduce the repair frequency;
- ⑤Reduce the manual repair grinding aids: Due to the rational design of the equipment, the adhesion force is better and the paint mist is smaller, which saves the paint and strengthens the tensile index. At the same time, it reduces the workload of repairing, almost eliminates the grinding, and greatly reduces the workload of operation assistants.
- ⑥Reduce occupational health hazards: reduce the labor of artificial spraying, reduce the physical health damage to the sprayers and the personnel participating in the painting project;
Reduce the cost of environmental protection: reduce the unnecessary volatilization of paint from the root cause, reduce VOCs emission indicators;
- ⑦Good interchangeability: Equipment involving common spare parts and vulnerable parts are standard and general parts, which are easy to purchase.



资质荣誉

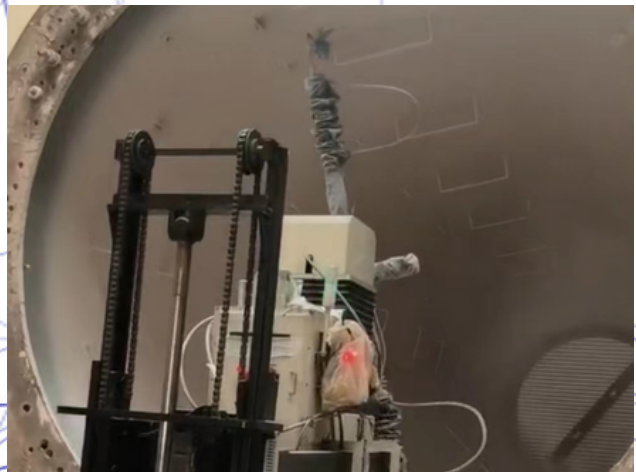
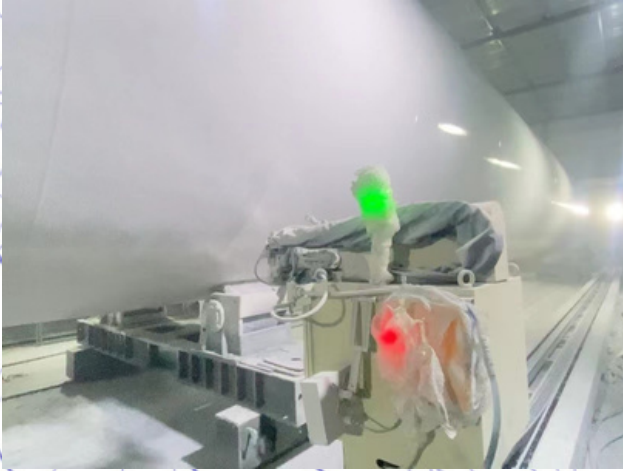
Honorary qualification



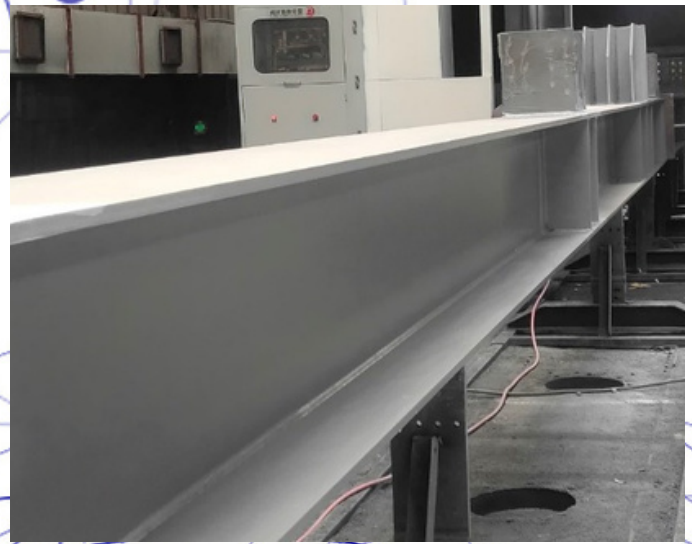
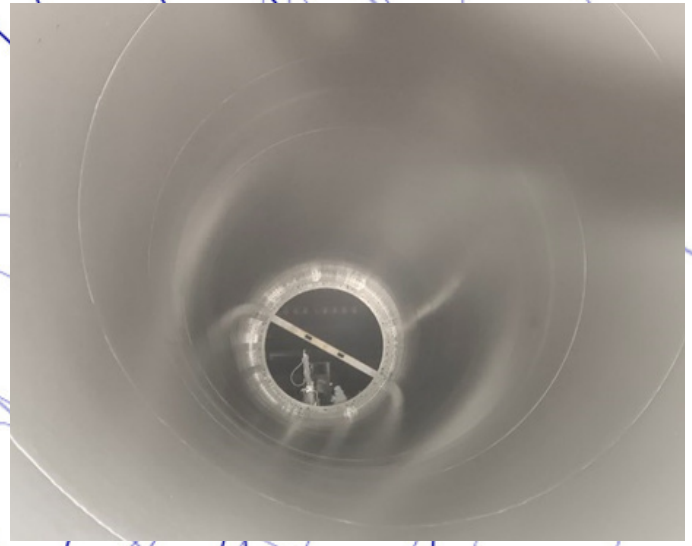
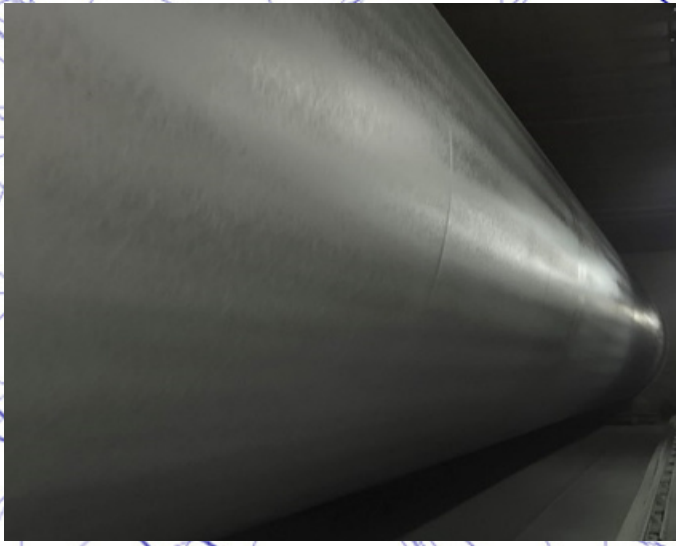


工程案例

Engineering case







Cooperative partner







Free Paint Spray Workers from Occupational Hazards



震宇防腐科技
ZHENYU TECHNOLOGY

山东震宇防腐科技有限公司

SHANDONG ZHENYU ANTI CORROSION TECHNOLOGY CO., LTD

-  : Industrial Park of Gangcheng High-tech Zone, Jinan City, Shandong Province
-  : 400-6671776
-  : youqigong@163.com
-  : www.sdzhenyu.cn

